

??????????

??????????

- [How long does it take to download "Kla.TV-Offline" to a hard disk via the Internet?](#)
- [How much time does it take to copy "Kla.TV-Offline" from one harddisk to one or two others??](#)
- [How do I format my hard disk correctly for "Kla.TV-Offline"? \(exFAT\)](#)
- [How does the "Kla.TV-Offline" counter work?](#)
- [Print the "Kla.TV-Offline" logo as a label with Avery Zweckform 3490](#)

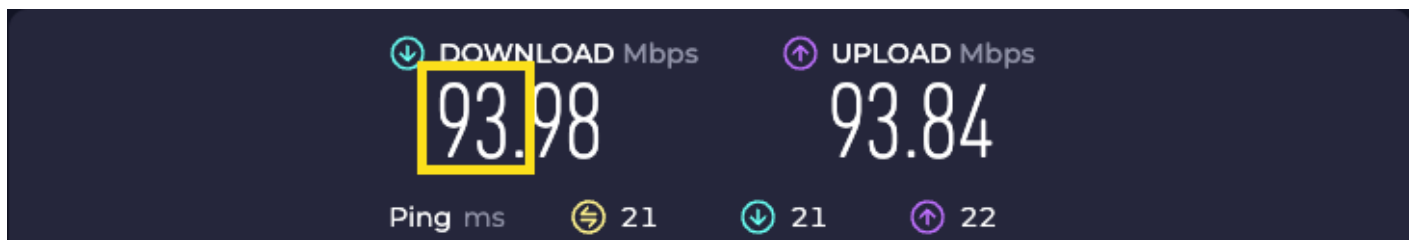
How long does it take to download “Kla.TV-Offline” to a hard disk via the Internet?

1. Speedtest

First do a speed test (see link below) and find out which “vehicle” (Internet speed) you have. In the table (under 2.) you can see how long it will take you to download Kla.TV-Offline at this speed.


<https://www.speedtest.net/>

On the page you press GO, the test takes a short time and then the results are displayed, e.g. as follows:



Take the first two numbers under “Download”. This is your download speed in Mbps.

2. Download duration of “Kla.TV-Offline”

Vehicle	Your download speed	Download duration (1.7TB)
 Tricycle	0.25 - 1 Mbps	approx. 300 days



Inline skates

2 - 4 Mbps

approx. 50 days



Bike

5 - 9 Mbps

approx. 25 days



Car

10 - 20 Mbps

approx. 10 days



Sports car

30 - 50 Mbps

approx. 3 days



Racing car

100 Mbps

approx. 2 days



Airplane

200 Mbps

approx. 24 h



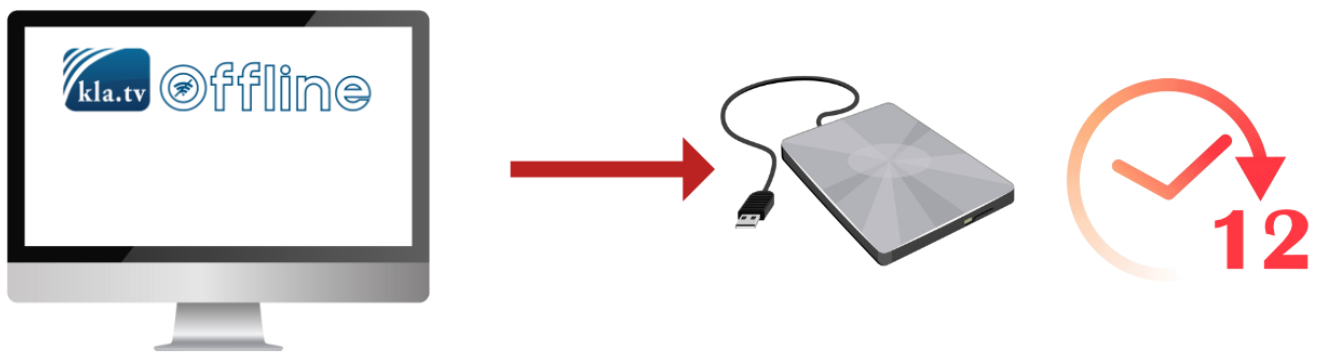
Jet plane

500 Mbps and more

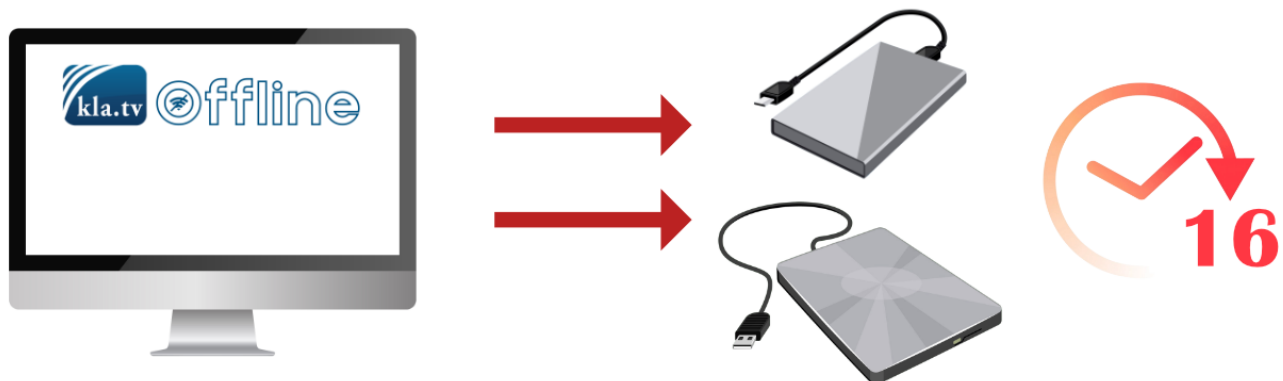
< 24 h

How much time does it take to copy "Kla.TV-Offline" from one harddisk to one or two others??

Expect copying 'Kla.TV-Offline' (1.7 TB) to ONE harddisk, to take 12 hours



Expect copying 'Kla.TV-Offline' (1.7 TB) to 2 harddisks simultaneously to take 16 hours



These calculations apply to the cheapest available harddisks in the market, each costing around 70\$. More expensive harddisks typically are faster.



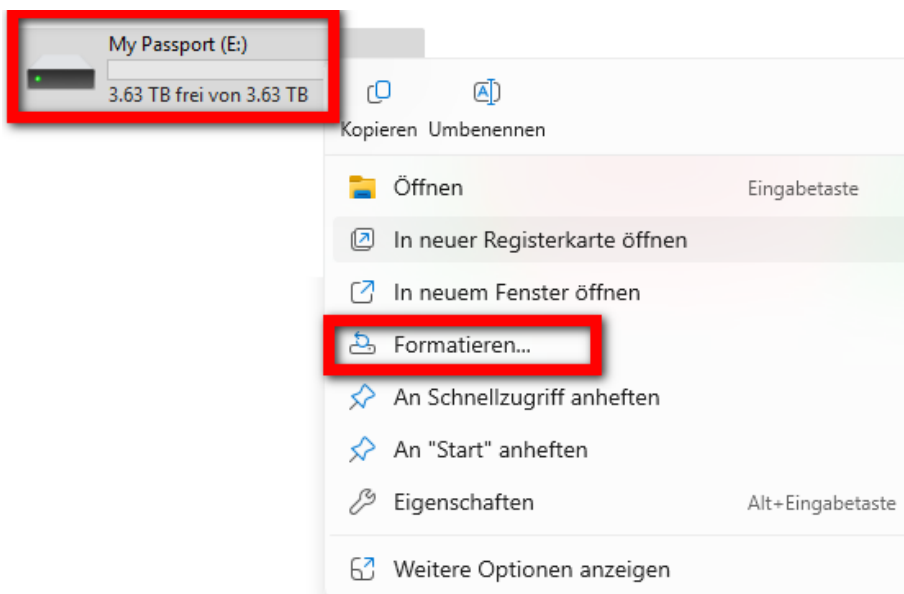
How do I format my hard disk correctly for “Kla.TV-Offline”? (exFAT)

To ensure that the hard disk can be read on any system, it is important that it is formatted correctly. It can then be read and written to on Mac, Windows and Linux.

Attention: all data on the hard disk will be irrevocably deleted after this process! Carry out this step before you have copied anything to the hard disk!

grafik.png Instructions for Windows

- Right-click on the hard disk > select “Format”



- Select “exFAT” for the file system and press “Start”

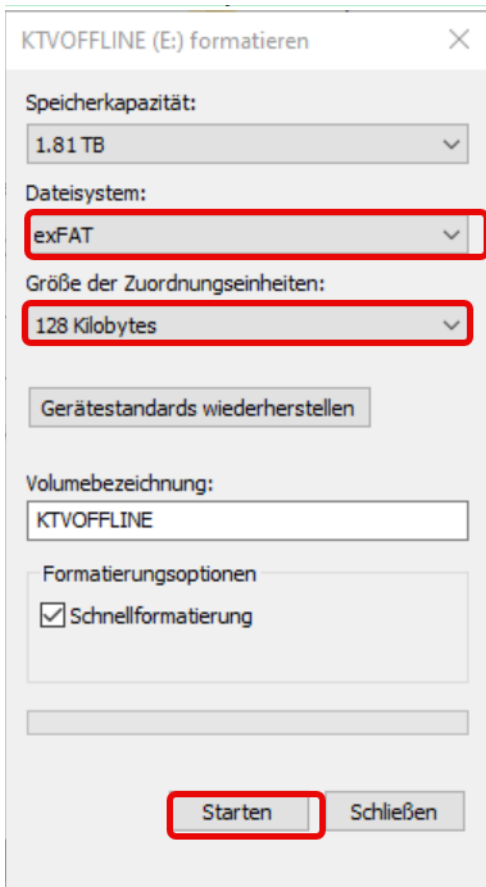


image.png Instructions for MacOS

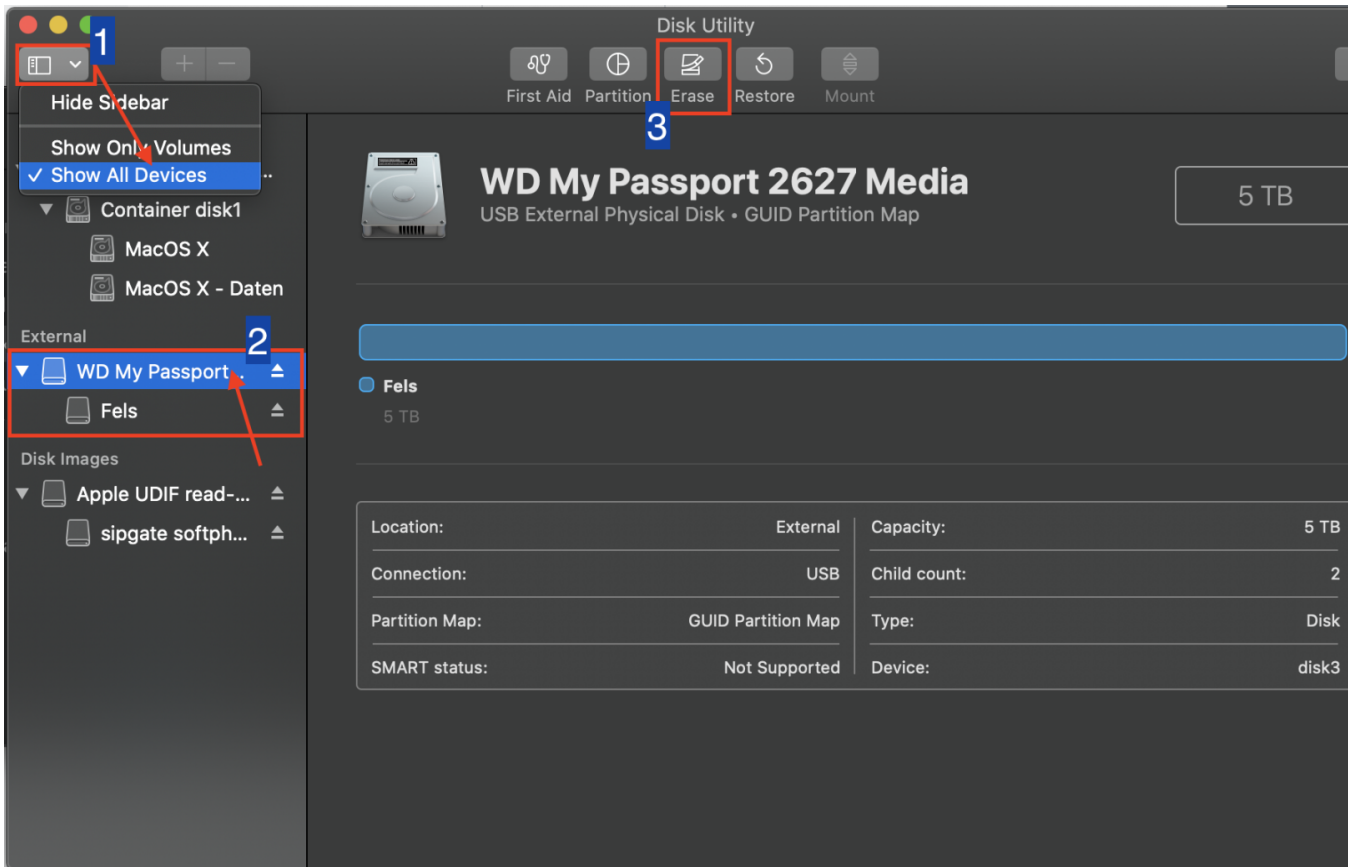
- Navigate to the magnifying glass in the Mac's menu bar and enter "Disk Utility" in the



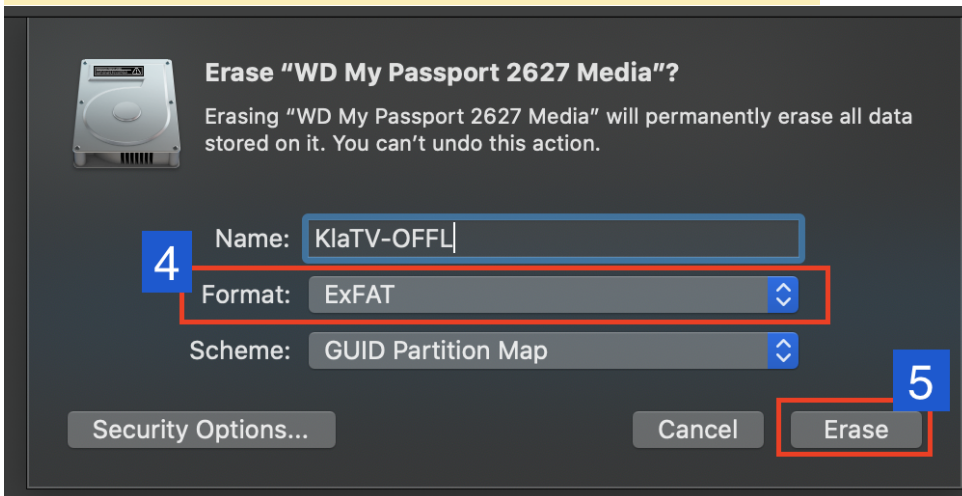
search field:



- Select ① "View" > "Show all devices"
- Select the storage medium you want to format in the ② sidebar. ATTENTION: make sure you have selected the correct hard disk. (Click on it above the hard disk name)
- Click on ③ "Delete"



- Select "ExFAT" for 4 Format and then click on 5 "Delete"



grafik.png Instructions for Linux

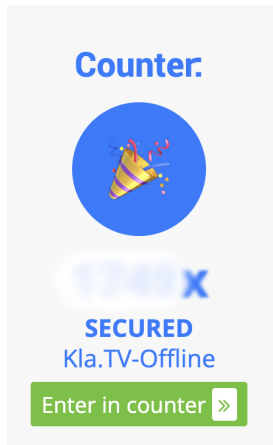
1. Start the Linux computer and connect the external hard disk.
2. Now you need the "GParted" program, which is already pre-installed on most Linux versions.

3. Open GParted and enter your user password.
4. Click on the selection field at the top right and select the hard disk to be formatted.
5. Again, select the appropriate partitions, right-click on them and go to "unmount".
6. Right-click again and select "Format as" and the desired file system (exFAT).
7. Click on the green tick above and confirm again. The hard disk will now be formatted.

[Festplatte unter Linux formatieren](#)

How does the “Kla.TV-Offline” counter work?

So that you and we can follow the distribution of “Kla.TV-Offline” in real terms, we have installed a counter at www.kla.tv/offline. Please share your distribution there!



How does the counting work?

a)

If you indicate in the form that you have downloaded the archive yourself, then the counter counts for this information: **+1** If you indicate that you have received it, it does not count you, because we assume that the person who gave you the hard disk has already recorded it in the counter. *It is best to ask if this is the case!*

Did you receive "Kla.TV-Offline" from someone or did you download it yourself? *

If you have downloaded it yourself, the counter will be increased by +1, unless you have already filled in the form once.

H A) Selber heruntergeladen / Downloaded by yourself

If B) Von jemandem erhalten / Received from somebody
a

will be increased by the specified number:

b)

The number of transfers is always added exactly to the counter. If you enter 3 there, for example, the counter counts **+3**

How many people have you passed on "Kla.TV OFFLINE" to? (enter number) *

If you have not yet passed it on, enter 0 and complete the form again later. If you have already completed the form once, only enter your new transfers here. The counter will be increased by the specified number:

c)

If you indicate in the form that you have already filled in the counter once and select that you have downloaded the archive yourself, then the information in point a) will NO longer count. However, it will still add the number of transfers from point b) to the counter.

Have you ever filled out this form (counter)? *

D A) Ja / Yes

u B) Nein / No

C) Weiss nicht / Not sure

Practical examples:

- If someone has received the archive from someone else and **has not** passed it on, the counter is not increased.
- If someone has downloaded the archive themselves and passed it on to two people, the counter adds +3
- If someone has already completed the form, they should only record these transfers that have not yet been recorded at an earlier point in time. They themselves are no longer counted.

Print the “Kla.TV-Offline” logo as a label with Avery Zweckform 3490

To cover several hard disks with the “Kla.TV-Offline” logo, the print sheet in Avery 3490 format can help!



Download here:

Word: <https://wiki.kla.tv/attachments/1>

PDF: <https://wiki.kla.tv/attachments/2>